

# ***Tipperary Town & its 5 Primary Schools***

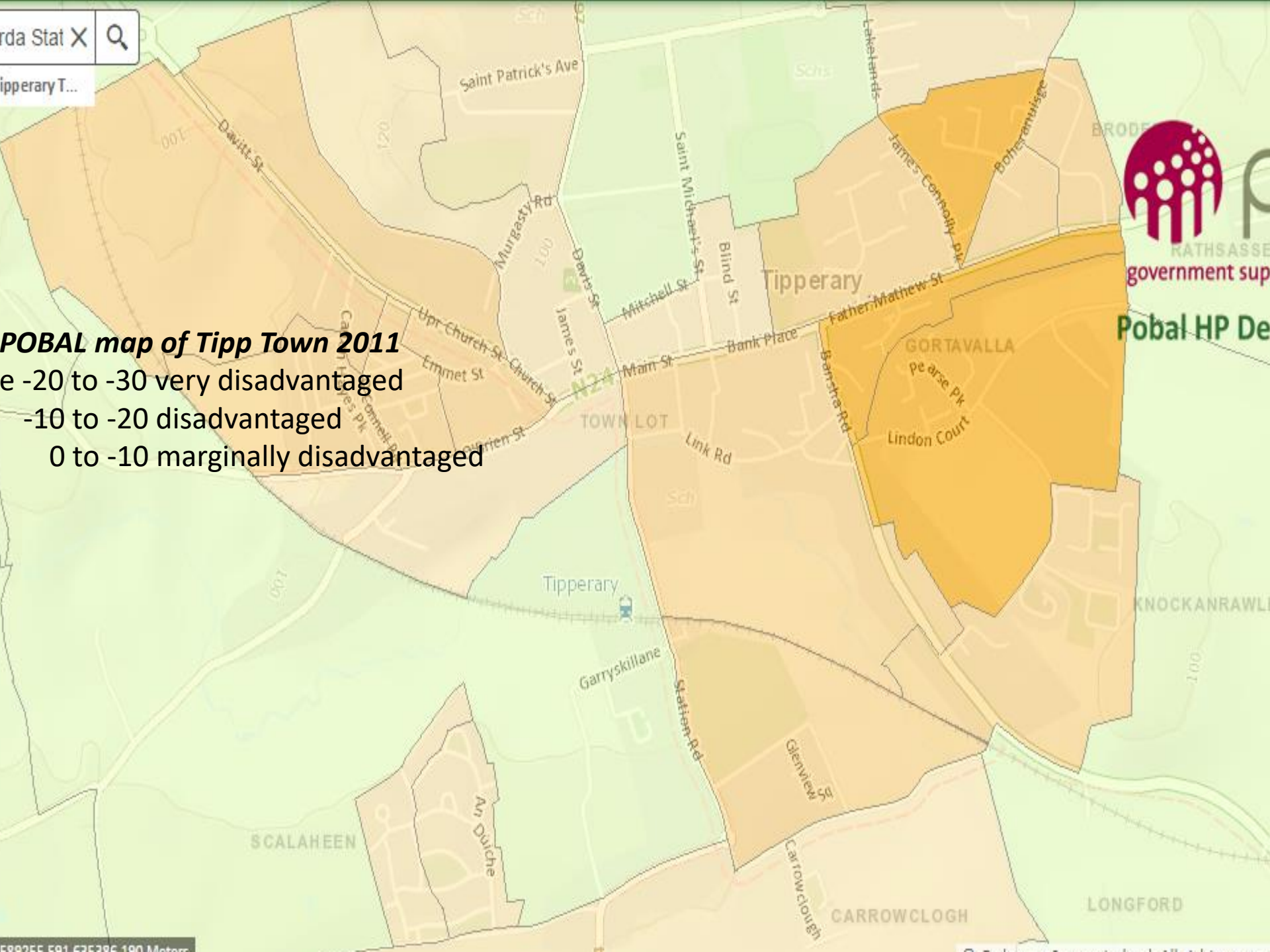
..a story of perseverance.

Louise Tobin 2020.

Population 5,000

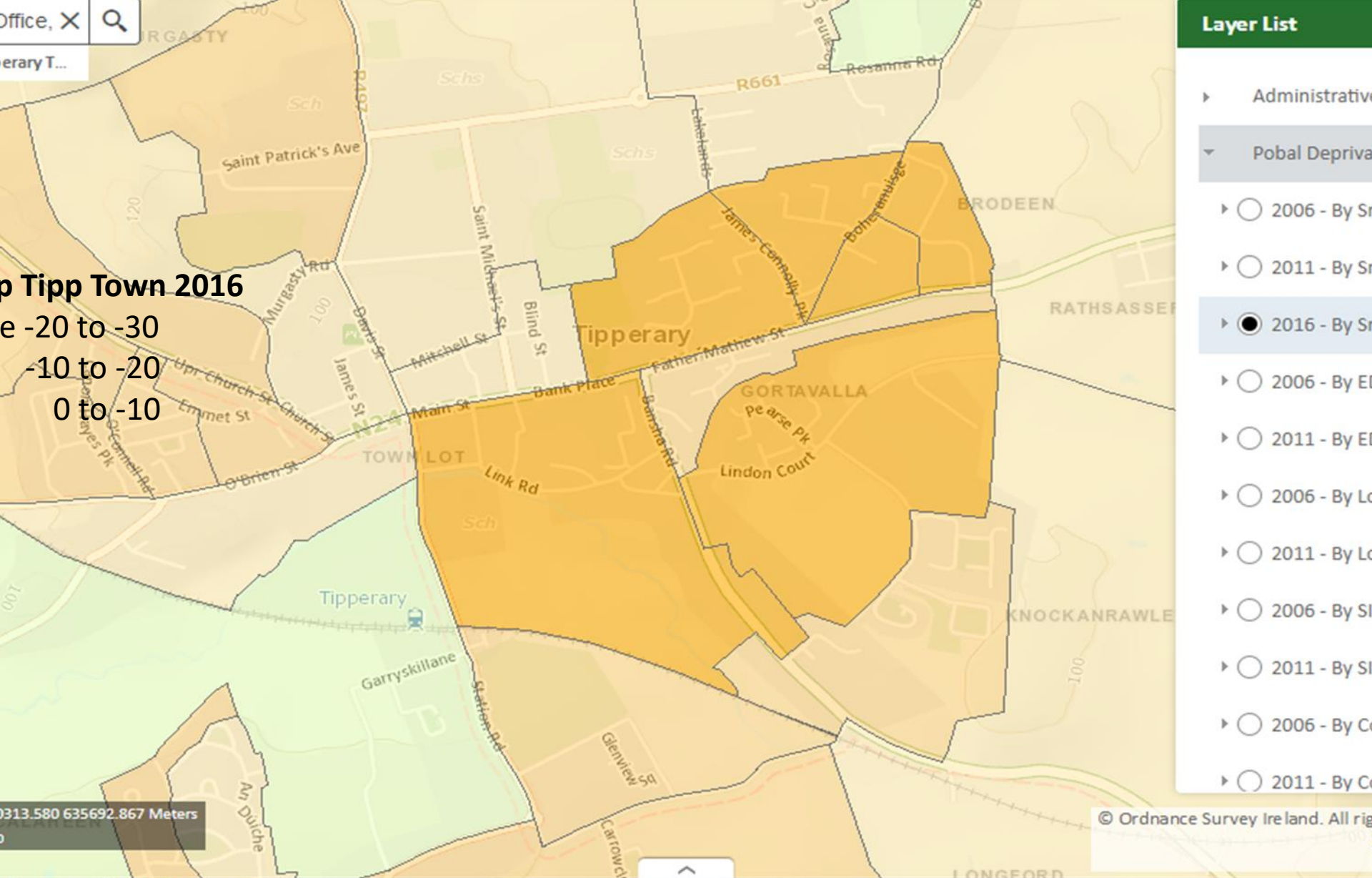
Unemployment rate

The unemployment rates for Tipperary Town are as follows;  
Males 31% Females 23% while the national average is 5.6%.



**POBAL map of Tipp Town 2011**  
-20 to -30 very disadvantaged  
-10 to -20 disadvantaged  
0 to -10 marginally disadvantaged

# Indices



# Campaign to get DEIS resources

- 2016-17 Public & Political Awareness
- 2017 Not in new list of DEIS schools
- 2017 Met DES officials in Social Inclusion  
Protested at DES Marlborough St.  
Met Minister Bruton FG/Think In Clonmel  
Appealed decision of non inclusion  
DES complaints procedure  
Ombudsman for children

# We continued

- 2018 Local Councillors involved  
**....MARCH 4 TIPP**

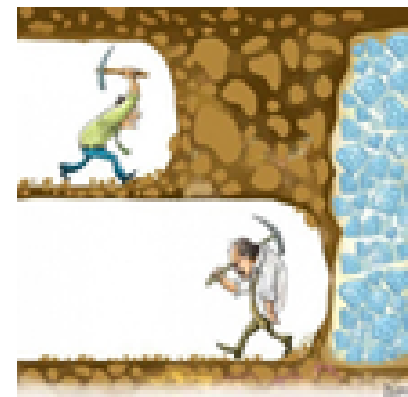


# Then 2019

- Local Political Support
- Meeting with Minister Mc Hugh
- Meetings with DES officials
- **Interim measures offered:**
  - \*Family Liaison Teacher-shared
  - \*Fast track EAL application-shared
  - \*Schools Excellence Fund
  - \*NEPS Literacy Research Project

# Possible suggestions when dealing with issues with the D.E.S.

- Public meetings - parents, staff, local politicians, other stakeholders, community reps etc.
- Working collectively with other schools
- Gather evidence/data. Submit to D.E.S.
- Invite Inspectorate for Advisory visit to discuss issues and report back to D.E.S.
- Seek political representation
- Suggest possible solutions to D.E.S.
- Involve local media
- Daily/weekly emails seeking follow up
- Don't give up/Keep up the Good Fight!!



# Next...

- Awaiting inclusion in the DEIS programme
- Announcement expected in Spring 2020

